

- Dry ceramic sensor
- Ranges from 40 mbar to 40 bar
- Accuracy $\leq 0,2\%$
- High overload capability
- Analog output: 4...20 mA, 2-wire
- Expanded temperature range, max. 125 °C (continuous medium temperature)



Pressure Transmitter P 132

Technical data:



Range:	0...40 mbar to 0...40 bar
Output signal:	4...20 mA, 2-wire 0...10 V, 3-wire
Accuracy:	$\leq \pm 0,2\%$ FS @ 25°C
Response time:	200 ms (other available on request)
Supply voltage:	9...32V DC, 20 mA output 15...30V DC, 10 V output
Ambient temperature:	-25...80 °C
Process temperature:	-40...125 °C
Temperature coeff.:	$\leq \pm 0,015\%$ FS/K (zero) $\leq \pm 0,01\%$ FS/K (span)
Long term stability:	$\leq \pm 0,15\%$ FS p. a.
Housing:	stainless steel, 1.4404
Sensor:	Ceramic AL ₂ O ₃
Electrical connection:	Connector EN 175301-803A, IP65 Connector M12x1, IP 67 Cable 2m/5m, IP 67

Ranges

Ordering code

range	gauge	absolut	overload (bar)
0...40 mbar*	A8		- 0,3 / 4
0...50 mbar*	B0		- 0,3 / 4
0...60 mbar*	A9		- 0,3 / 4
0...100 mbar	00		- 0,3 / 4
0...160 mbar	01		- 0,6 / 5
0...200 mbar	B1	B2	- 1 / 6
0...250 mbar	02		- 1 / 6
0...0,4 bar	03	28	- 1 / 6
0...0,5 bar	B7		- 1 / 6
0...0,6 bar	04		- 1 / 10
0...1 bar	05	30	- 1 / 10
0...1,6 bar	06	31	- 1 / 18
0...2 bar	B3	B4	- 1 / 18
0...2,5 bar	07	32	- 1 / 18
0...4 bar	08	33	- 1 / 25
0...6 bar	09	34	- 1 / 40
0...10 bar	10	35	- 1 / 40
0...16 bar	11	36	- 1 / 40
0...20 bar	B5	B6	- 1 / 40
0...25 bar	12	37	- 1 / 40
0...40 bar	13	38	- 1 / 60
0...60 bar	14	39	- 1 / 100
-100...0 mbar	C4		- 0,3 / 4
-100...100 mbar	C5		- 1 / 6
-200...0 mbar	D2		- 1 / 6
-200...200 mbar	D3		- 1 / 6
-1...1 bar	D6		- 1 / 10
-1...3 bar	D8		- 1 / 25
-1...5 bar	D9		- 1 / 40
-1...9 bar	E1		- 1 / 40
-1...15 bar	E2		- 1 / 40

* Accuracy 0,5% FS

Output signal

- 4 4...20 mA 2-wire
- 1 0...10V 3-wire

Range

See table on the left
99 non standard range (on request)

Process connection and material

- M Dairy thread ND 25 DIN 11851, 1.4404
- 6 Dairy thread ND 32 DIN 11851, 1.4404
- 7 Dairy thread ND 40 DIN 11851 1.4404
- K Dairy thread ND 40 aseptic 1.4404
- N DRD flange ND 65 1.4404
- F G 1 A, 1.4404
- 5 G 1 ½ A, 1.4404
- J Varivent DN 68, 1.4404
- L Clamp 1", DN 25...40, 1.4404
- 9 others (on request)

Sensor seal

- 1 FPM (Viton) Standard
- 2 NBR (Nitril)
- 3 EPDM
- 4 Fluor-Silicon
- 5 Chemraz 505
- 9 others (on request)

Electrical connection

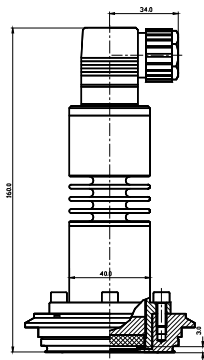
- 1 Connector EN 175301-803A
- 4 Connector EN 175301-803A, potted electronic
- A Connector M12x1
- B Connector M12x1, potted electronic
- F Quickon Connector
- G Quickon Connector, potted electronic
- 0 5m cable, IP 67
- 5 5m cable, IP 67, potted electronic
- 6 2m cable, IP 67,
- 7 2m cable, IP 67, potted electronic
- 8 6 pin Mil connector
- 9 others (on request)

Options

- R pure ceramic sensor 99,9% Al₂O₃
- T minimized case volume
- RT pure ceramic sensor 99,9% Al₂O₃ with minimized case volume

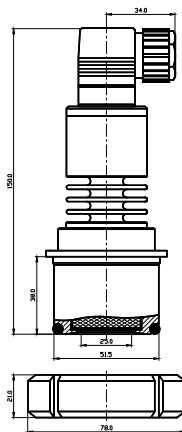
P132 -

Dimensions (mm)



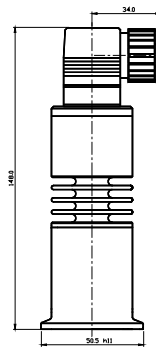
Varivent DN 68

Ranges:
from 40 mbar to 40 bar



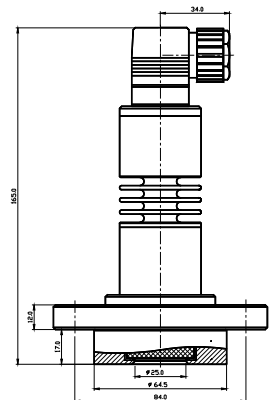
Dairy thread ND 40 aseptic

Ranges:
from 40 mbar to 40 bar



Clamp ND 25/38/40

Ranges:
from 40 mbar to 40 bar

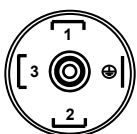


DRD flange

Ranges:
from 40 mbar to 40 bar

Electrical connections

Connector EN 175301-803A



4...20 mA 2-wires
PIN1 Signal +
PIN2 Signal -

0...10V 3-wires
PIN1 in +
PIN2 in -
PIN3 out +

Quickon-Connector



4...20 mA 2-wires
PIN1 Signal +
PIN2 Signal -

0...10V 3-wires
PIN1 in +
PIN2 in -
PIN3 out +

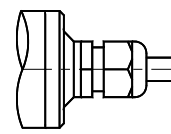
M12x1, 4-pin Connector



4...20 mA 2-wires
PIN1 Signal +
PIN3 Signal -

0...10V 3-wires
PIN1 in +
PIN3 in -
PIN4 out +

Cable connection



4...20 mA 2-wires
red Signal +
black Signal -

0...10V 3-wires
red in +
black in -
white out +



AIR ET EAU SYSTEMES 132, rue de l'église F-54710 LUDRES

Tél.(+33)3 83 26 33 33 Fax.(+33)3 83 26 18 63

www.air-eau.com